



# MONTHLY MEMBERSHIP PROGRESS REPORT

District 3231A2

Results as of: 05/31/2018

GMT: JAYESH THAKKAR

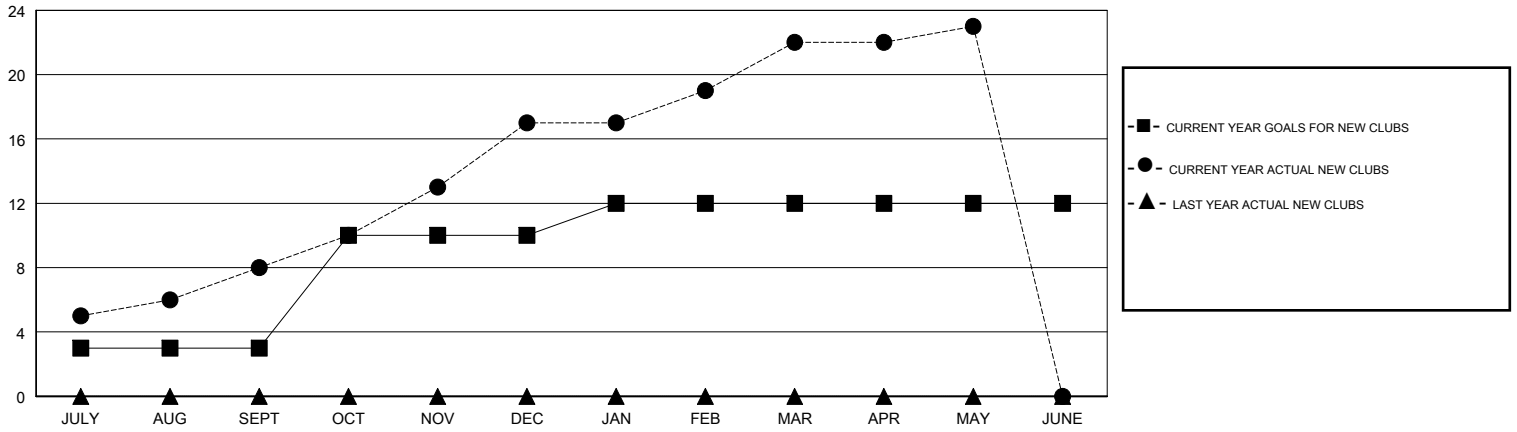
LOCATION INDIA

GMT CA

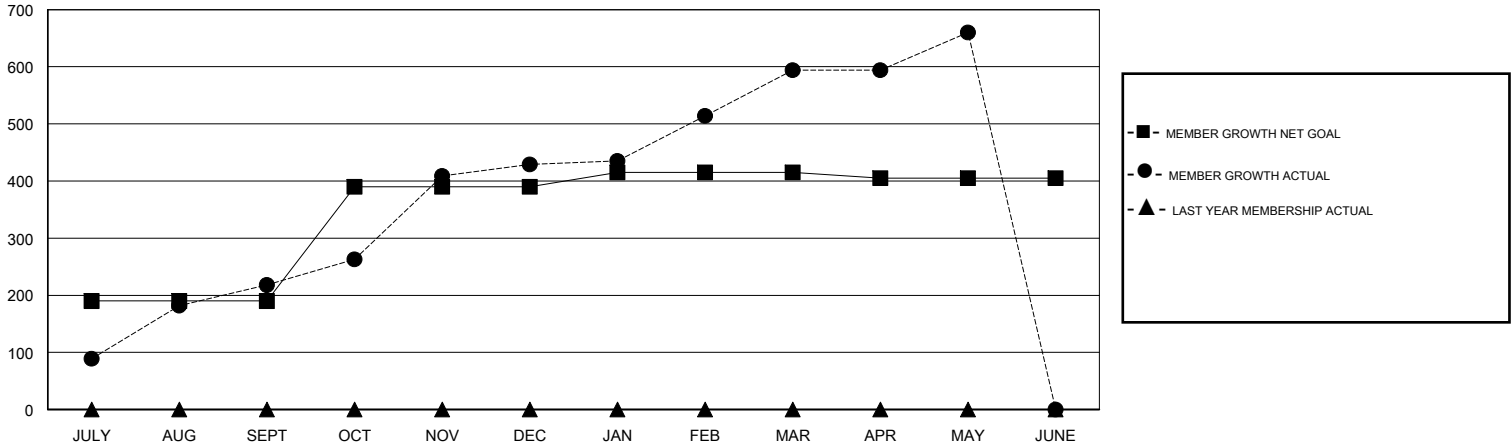
Clubs			
RESULTS FOR 2017-2018			
QUARTER	NEW CLUB GOAL	NEW CLUBS	DROPPED CLUBS
JULY/AUG/SEPT	3	8	0
OCT/NOV/DEC	7	9	2
JAN/FEB/MAR	2	5	0
APR/MAY/JUNE	0	1	0

Members			
RESULTS FOR 2017-2018			
QUARTER	MEMBER GROWTH NET GOAL	MEMBER GROWTH ACTUAL	DROPPED MEMBERS ACTUAL (including transfers)
JULY/AUG/SEPT	190	444	214
OCT/NOV/DEC	200	341	118
JAN/FEB/MAR	25	222	52
APR/MAY/JUNE	-10	175	103

GOALS AND ACTUAL NEW CLUBS CUMULATIVE



GOALS AND ACTUAL MEMBERS CUMULATIVE



DROPPED CLUBS: 2	83 CLUBS OF 112 ADDED 1 OR MORE NEW MEMBERS	<u>GENDER DISTRIBUTION</u>	
DROPPED MEMBERS		MALE	2,740 (64.67%)
DECEASED	13	FEMALE	1,497 (35.33%)
CLUB CANCELLED	17	Women Percentage Fiscal Year Goal: 35%	
OTHER	455	<a href="#">CLICK HERE FOR CUMULATIVE MEMBERSHIP DATA</a>	
TOTAL	485	TOTAL FAMILY UNIT MEMBERS	1,781
		FAMILY MEMBERS PAYING HALF DUES	932